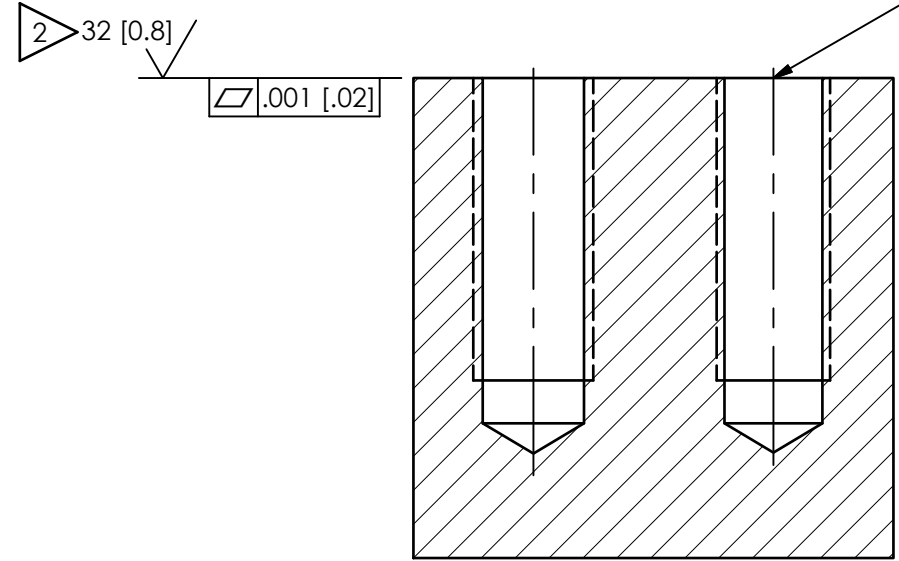
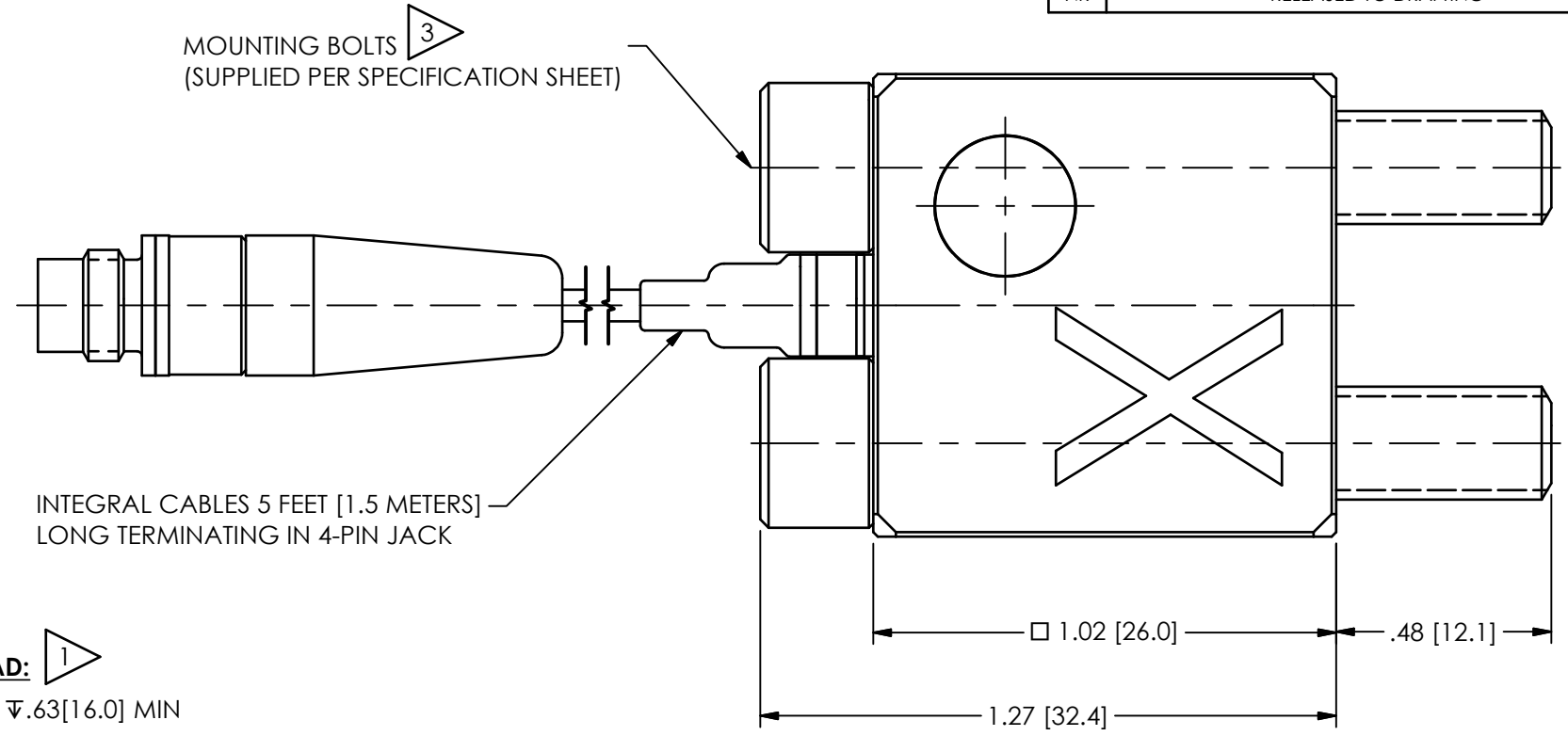
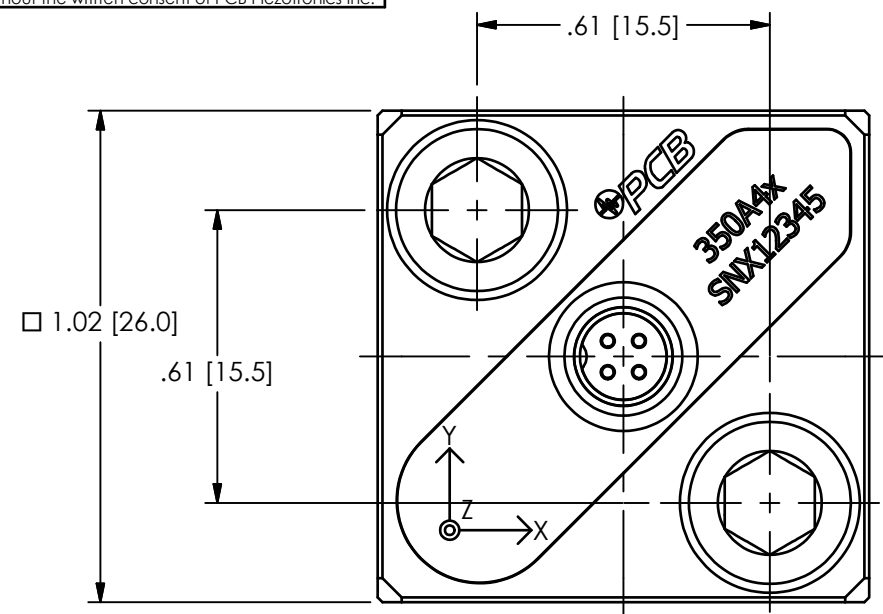


PCB Piezotronics Inc. claims proprietary rights in the information disclosed hereon. Neither it nor any reproduction thereof will be disclosed to others without the written consent of PCB Piezotronics Inc.

60926

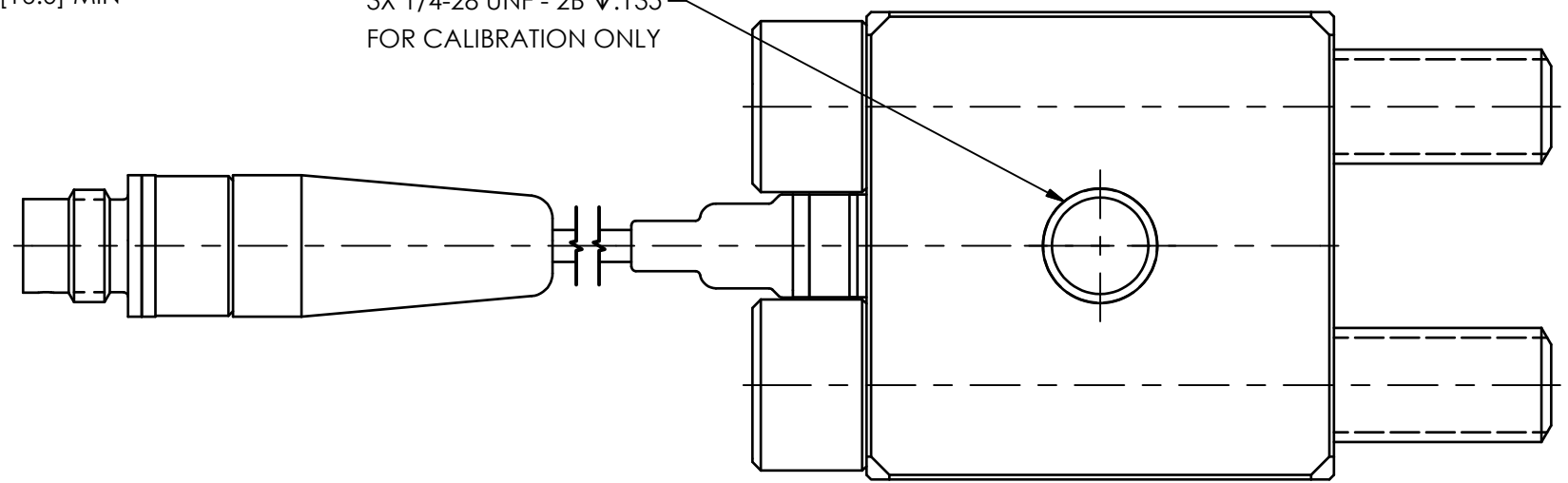
REVISIONS		
REV	DESCRIPTION	DIN
NR	RELEASED TO DRAFTING	45839



**STANDARD THREAD:**  
2X 1/4-28 UNF-2B  $\nabla$ .63 [16.0] MIN

**METRIC THREAD:**  
2X M6 X 0.75-6H  $\nabla$ [16.0] MIN

3X 1/4-28 UNF - 2B  $\nabla$ .135  
FOR CALIBRATION ONLY



- 4 APPLY COUPLING GREASE BETWEEN MOUNTING SURFACES FOR BEST RESULTS (SUPPLIED PER SPECIFICATIONS SHEET)
- 3 RECOMMENDED MOUNTING TORQUE 2-5 FT-LBS [3-7 N-M]
- 2 OVER  $\varnothing$ 1.6 [40.6] MIN, FOR BEST RESULTS
- 1 DRILL PERPENDICULAR TO MOUNTING SURFACE TO WITHIN  $\pm$ 1°

UNLESS OTHERWISE SPECIFIED TOLERANCES ARE:		DRAWN		CHECKED		ENGINEER	
DIMENSIONS IN INCHES	DIMENSIONS IN MILLIMETERS [IN BRACKETS]	KRM	9/1/16	JDG	9/1/16	AJA	9/1/16
DECIMALS XX $\pm$ .01 XXX $\pm$ .005	DECIMALS X $\pm$ .3 XX $\pm$ .13	TITLE					
ANGLES $\pm$ 2 DEGREES	ANGLES $\pm$ 2 DEGREES	INSTALLATION DRAWING 350A4x					
FILLETS AND RADII .003 - .005	FILLETS AND RADII 0.07 - 0.13	SCALE: 3X SHEET 1 OF 1					

**PCB PIEZOTRONICS**  
3425 WALDEN AVE. DEPEW, NY 14043  
(716) 684-0001 E-MAIL: sales@pcb.com

CODE IDENT. NO. 52681  
DWG. NO. 60926